

AUTOMATED SELF NAVIGATED DUSTBIN DISPENSARY SYSTEM IN SMART CITIES

¹Prakash E.P, ²Sara Ruth John, ³Anu Krishna K.B, ⁴Pavithra P

¹Associate Professor, ²Final year Student, ³Final year Student, ⁴Final year Student,

^{1,2,3,4}Department of computer science and Engineering SNS College of Engineering Coimbatore, India

Abstract: Today main issue for pollution is Garbage Overflow. It creates unhygienic condition for the people and create bad smell in the surrounding's leading to spread of some deadly diseases and human illness. To avoid all such situation's we are going to implement a project called IoT Based waste management using smart dustbin. Implementation is done with the help of IoT concept. The Internet of Things (IoT) is a concept in which surrounding objects are connected through wired and wireless networks without user intervention. Objects communicate and exchange information. In this system multiple dustbins are located throughout the city or the Campus, these dustbins are provided with a sensor which helps in tracking the level and weight of the garbage bins and a unique ID will be provided for every dustbin in the city so that it is easy to identify which garbage bin is full. When the level and weight of the bin reaches the threshold limit, the device will transmit the reading along with the unique ID provided. After that the dustbin will move for dispatch the excess waste to the particular navigated place. In order to avoid the decaying smell around the bin harm-less chemical sprinkler is used which will sprinkle the chemical as soon as the smell sensors detect the decaying smell. Once the bins are full then user will not be able to access the bins. In such circumstances the bin displays the direction of the nearby bins on LCD display also generate the voice messages if the user place's the waste on the floor. The status of the bin is accessed by the concerned authorities from their place with the help of Internet and an immediate action will be taken to replace overflowing bins with the empty bins.

Keywords: Smart Dustbins, Ultrasonic sensor, GSM, IR sensor, Toxic sensor, LCD, Motor Driver, IOT Module Rain sensor, IOT Cloud, Micro controller.

I. INTRODUCTION

Garbage has been a big problem in most of the cities, where very often one can see the pictures of garbage overflow. Amount of garbage waste is generally determined on the basis of two major factors, the population in a given area and also on consumption patterns. They are lakhs of bins at public places but still, there is waste overflow from these bins as they are not automated. The user of the bin throws the waste and do not care for the overflow. If waste overflow from dustbins is solved, it decreases foul smell in surroundings of bin and users will use the bin with comfort. Therefore, waste collection and management is becoming a huge challenge for Municipal Corporation of a city. In general, the garbage wastes are collected manually after visiting the entire area by the corporation vans, which is a tedious and sometimes faced huge challenge to manage the entire city. Moreover, in big cities, where extensive numbers of dustbins are deployed, physically hunting down and cleaning in routine basis is challenging. The garbage bins may get filled early or may get damaged, which requires immediate attention to resolve the problems or the bin will should itself has the smart facility to address the problems. Therefore, smart and efficient management of the waste is one of the focused areas in all the projects on the smart city, smart living.

In literature, several research groups have attempted to mitigate this waste management issues, but a few works have been aimed to address both the bin monitoring and waste collection efficiently.

In [1], Muthukumar P & Swagata B Sarkar used the Adhoc transceiver for communication, a sensor for monitoring the level of garbage in the bin. When the bin is full, it is notified to the corporation authorities to replace the bins with empty bins.

Further [2] Andrei Borozdukhin ,Olga Dulilina proposed a formal mathematical model of the task of dynamic optimal route and formal the optimization criterion for time-optimal garbage collection of all waste from landfills.

Similarly [3] G Sai Rohit , M Bharat Chandra, Shaurabh Saha, Debanjan Das proposed Dual Dustbin Model for Waste Management in Smart Cities, Whenever any dustbin is filled up, a message is sent to the concerned authority. Dustbins have automatically close and open feature depending on the presence of an obstacle.

In [4] Aayush Tripathi, Chinmay Pandey, Ankur Narwal Smart Dustbin System for Metro Station. The dustbin was based on the RFID sensor.To make the system ecofriendly and preserve carbon neutral footprint of metro we are using miniature solar panel for power supply. Recently, A. S. Bharadwaj et. al [5] presented a conceptual approach for solid waste management to mitigate these challenges. Their model consists of GPS and internet enabled Smart Dustbin with Intel Galileo as a central control unit. But still, the system is not fully automated to access the dustbin.

Therefore, it is quite evident that most of the existing models so far just sends the message once the dustbins get filled, but there is no solution if authority will not have enough time to pick the waste effectively or in between if the dustbins get damaged/leaks. Further, there is no proper solution to automatically open and close the lid of the dustbins. Most of the cases users manually open the lid through the garbage, which may cause several infected diseases. Keeping in mind all these issues the present work proposed a fully automated waste management systems where once the dustbin gets filled it automatically moves for dispatching the excess waste to the particular navigated place (common disposal point).

II. PROPOSED DESIGN AND WORKING PRINCIPLE

In the proposed system, multiple dustbins are located throughout the city or the Campus, these dustbins are provided with a sensor which helps in tracking the level and weight of the garbage bins and a unique ID will be provided for every dustbin in the city so that it is easy to identify which garbage bin is full. When the level and weight of the bin reaches the threshold limit, the device will transmit the reading along with the unique ID provided. After that the dustbin will move for dispatch the excess waste to the particular navigated place. In order to avoid the decaying smell around the bin harmless chemical sprinkler is used which will sprinkle the chemical as soon as the smell sensors detect the decaying smell. Once the bins are full then user will not be able to access the bins. In such circumstances the bin displays the direction of the nearby bins on LCD display also generate the voice messages if the user place's the waste on the floor.

BLOCK DIAGRAM:

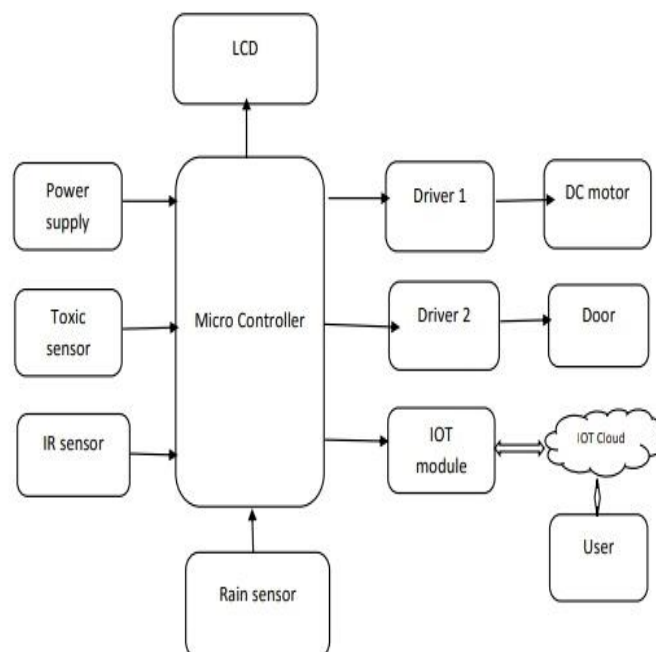


Fig 1: Block diagram of our Dustbin model

GSM SIM 900A MODEM

Sends messages to the control room if the bins are full. The modem works in frequencies of 900/1800 MHz. The RX pin of the modem is connected to pin 10 of Arduino and the TX pin is connected to the pin 9 of Arduino. The modem has an SMA connector with GSM Antenna and a sim card holder. The modem is given an external power supply of 12V.

SERVO MOTOR

Servo motor is used to open the lid of the dustbin if there is an obstacle in front of the dustbin. In our model, its functionality depends on the values of IR Obstacle sensor and the servo is turned 180 degrees to open the lid. Generally, the angle can be adjusted between 0-180 degrees.

IR OBSTACLE SENSOR

The IR sensor is used to detect the presence of an obstacle in front of the dustbin. It has an IR emitter and a receiver. Generally, this sensor has a high precision. The IR obstacle sensor has a potentiometer which can be used to adjust the range of measurement. The onboard LED indicator is used to check the presence of an obstacle.

RAIN SENSOR

A rain sensor or rain switch is a switching device activated by rainfall. It is made up of two parallel conducting material such as copper, aluminum.

GAS SENSOR

Gas sensor measure and indicate the concentration of certain gases in an air via different technologies. Typically employed to prevent toxic exposure and fire, gas detectors are often battery operated devices used for safety purposes.

DC MOTOR

DC or direct electric current motor works on the principle, when a electric current carrying conductor is placed in a magnetic field, it experiences a torque and has a tendency to move. This is known as motoring action. If the direction of electric current in the wire is reversed, the direction of rotation also reverses. When magnetic field and electric field interact they produce a mechanical force, and based on that the working principle of dc motor established.

L293D MOTOR DRIVER

A motor driver is an integrated circuit chip which is usually used to control motors in autonomous robots. Motor driver act as an interface between Microcontroller and the motors. The most commonly used motor driver IC's are from the L293 series such as L293D, L293NE, etc. These ICs are designed to control 2 DC motors simultaneously. L293D consist of two H-bridge. H-bridge is the simplest circuit for controlling a low current rated motor. We will be referring the motor driver IC as L293D only. L293D has 16 pins.

INTERNET OF THINGS (IoT)

The internet of things (IoT) is the network of physical devices, vehicles, buildings and other items—embedded with electronics, software, sensors, actuators, and network connectivity that enable these objects to collect and exchange data. It allows objects to be sensed and controlled remotely across existing network infrastructure, creating opportunities for more direct integration of the physical world into computer-based systems, and resulting in improved efficiency, accuracy and economic benefit.

ULTRASONIC SENSOR(HC-SR04):

Ultrasonic sensor is used for monitoring the level of waste in bins. An Ultrasonic sensor can measure in the range of 2cm – 400cm. The sensor includes a transmitter, receiver and control circuit.

The dustbins are provided with a sensor which helps in tracking the level and weight of the garbage bins and a unique ID will be provided for every dustbin in the city so that it is easy to identify which garbage bin is full. When the level and weight of the bin reaches the threshold limit, the device will transmit the reading along with the unique ID provided. After that the dustbin will move for dispatch the excess waste to the particular navigated place. In order to avoid the decaying smell around the bin harm-less chemical sprinkler is used which will sprinkle the chemical as soon as the smell sensors detect the decaying smell. The status of the bin is accessed by the concerned authorities from their place with the help of Internet and an immediate action will be taken to replace overflowing bins with the empty bins.

DATA FLOW DIAGRAM

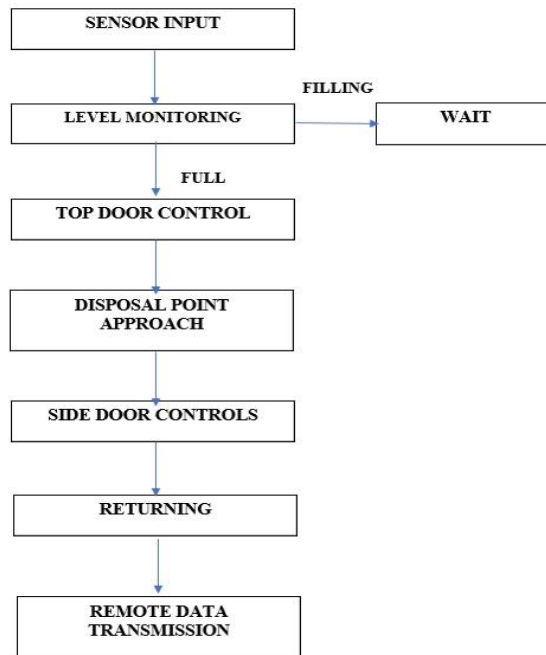


Fig 2

Each dustbin is tracked by means of a unique id. The ultrasonic sensor is used to find the height of garbage filled at different intervals of time.

The dustbin automatically opens and closes if any person comes in front of him. If waste in the dustbin exceeds beyond a threshold value, then the dustbin gets closed automatically and bin cannot be used by the people. With the help of the motor driver and DC motor the dustbin self navigates to the common disposal point.

The model is working very well. If waste overflow from dustbins is solved, it decreases foul smell in surroundings of bin and users will use the bins with comfort. This also enables the detection of gases in the dustbin. The explosive substance dropped into the dustbin by the terrorist will be identified and information will be given to the concerned authorities as well as to the public.

III. RESULTS AND DISCUSSION

All the hardware modules are implemented in real life dustbins as shown in Fig. 3 and 4. Figure 3 demonstrates the working of IR sensors to detect the presence of a person, which gives the signal to the servo motor to open the lid of the dustbin. Therefore, the automatic closing and opening of lid help the person to throw the garbage inside the dustbin without touching it. This will help to reduce the spreading of diseases.



Fig 3: Motor drive and Sensors integrated in the dustbin

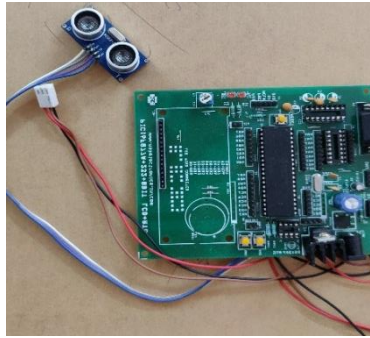


Fig 4: Interfacing sensors with Micro Controller

IV. CONCLUSION AND FUTURE SCOPE

Waste management and disposal is one of the major challenges in all the cities. The present papers presents a self navigated dustbin dispensary system for automated operation of dustbins saving both time and money. The proposed waste management model is implemented in small scale using the IR, gas sensors , ultrasonic sensors, GSM module, servomotor and 12V battery supply. The authority must only monitor the common disposal point. This can contribute a lot towards the clean and hygienic environment in building a smart city. Further the present model will be made more user friendly and cost effective by connecting an LCD display to indicate the status of the bins and generating the required energy at the sensor node itself to make them self sustainable.

REFERENCES

- [1] S. V. Kumar, T. S. Kumaran, A. K. Kumar and M. Mathapati, "Smart garbage monitoring and clearance system using internet of things," 2017 IEEE International Conference on Smart Technologies and Management for Computing, Communication, Controls, Energy and Materials (ICSTM), Chennai, 2017, pp. 184-189.
- [2] S. Thakker and R. Narayanamoorthi, "Smart and wireless waste management," 2015 International Conference on Innovation in Information, Embedded and Communication Systems (ICIIECS), Coimbatore, 2015, pp. 1-4.
- [3] M. Arebey, M. A. Hannan, H. Basri and H. Abdullah, "Solid waste monitoring and management using RFID, GIS and GSM,"
- [4] M. Hannan, M. Arebey, R. A. Begum, and H. Basri, "Radio Frequency Identification (RFID) and communication technologies for solid waste bin and truck monitoring Fig.6: Text message received by the authorized mobile Fig.5: Text message received by the authorized mobile 4system", Waste Management, Vol. 31, pp. 2406-2413, 2011.
- [5] J. Joshi et al., "Cloud computing based smart garbage monitoring system," 2016 3rd International Conference on Electronic Design (ICED), Phuket, 2016, pp. 70-75.
- [6] A. S. Bharadwaj, R. Rego and A. Chowdhury, "IoT based solid waste management system: A conceptual approach with an architectural solution as a smart city application," 2016 IEEE Annual India Conference (INDICON), Bangalore, 2016, pp. 1-6.